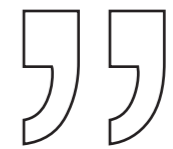




A large, stylized left opening quotation mark consisting of two curved lines.

Open the door to elegance,  
frame your view with style  
Discover the finest doors  
and windows.

A large, stylized right closing quotation mark consisting of two curved lines.

*Secure, stylish, stunning  
Doors and windows that inspire.*



*Enhance your home's charm with doors and  
windows crafted for beauty and strength.*

# Intro

LUMANI Systems, part of the Damsun Group, is the exclusive part-ner of SCHÜCO-GERMANY, delivering high-performance aluminum windows, doors, skylights, louvers, and façades. Headquartered in Ludhiana, we have a strong presence across Punjab, Himachal Pradesh, Haryana, Delhi-NCR, Uttarakhand, Rajasthan, Jammu & Kashmir, and Uttar Pradesh.

Engineered for thermal, sound, and dust insulation, our window systems ensure exceptional performance, energy efficiency, and durability. With rigorously tested, inter-compatible systems, we set new benchmarks in design, security, and sustainability.

Backed by innovation and global expertise, LUMANI Schüco creates intelligent building envelopes that harmonize aesthetics, technology, and environmental responsibility. Trusted by architects and industry leaders, we deliver unmatched performance in modern architecture.





## Welcome to Damsun India Pvt. Ltd.

### Innovating with Excellence, Performing with Precision

Damsun India Pvt. Ltd. stands at the forefront of doors, windows, facades, and outdoor furniture, delivering solutions that seamlessly blend innovation, performance, and design excellence. With a strong legacy of precision engineering and craftsmanship, we prioritize energy efficiency, durability, and seamless functionality in every product. Our expertise lies in creating high-performance solutions that enhance modern spaces, ensuring comfort, security, and lasting value for our clients. Through continuous innovation and a commitment to quality, we redefine industry standards and push the boundaries of excellence.

At **Damsun**, we don't just create architectural solutions we craft experiences that stand the test of time.

## 12+

**Year of Expertise** in delivering premium doors, windows, and facades with innovation and performance.

## 10,000+

**Projects Completed**, transforming spaces with durable, efficient, and high-performance solutions.





**Puneet Garg**  
**CMD**

Puneet Garg, the Chief Managing Director of Damsun Group, is a driving force behind the company's excellence in custom windows, doors, facades, and louvers. With a deep commitment to design, innovation, and performance, he has led Damsun to become a trusted name in the industry, known for its technologically advanced and maintenance-free solutions.

With over 18 years of expertise, he has expanded Damsun's capabilities across manufacturing, production, installation, and servicing, ensuring a seamless experience for clients. His leadership has also strengthened the group's portfolio, introducing comprehensive architectural solutions that cater to evolving market needs.

Puneet Garg's vision for LUMANI Schüco is to push the boundaries of high-performance aluminum fenestration by integrating cutting-edge technology, superior insulation, and sustainable design. His focus on precision engineering and innovation continues to drive Damsun and LUMANI toward shaping the future of modern architecture.

# Our Team

At Damsun India Pvt. Ltd., our strength lies in our highly skilled and dedicated team, the true driving force behind our success. With over two decades of industry expertise, we have built a strong foundation that ensures seamless execution at every stage of a project. Our technically proficient experts bring un-matched precision to design, engineering, and performance-driven solutions.

The well-trained service team equipped with in-depth expertise and meticulous attention to detail, ensures flawless installation & execution of projects, guaranteeing durability and long-term reliability. Our proactive and detail-oriented project coordinators facilitate smooth communication and seamless co-ordination, ensuring every project is executed efficiently and to the highest standards. Backed by a cutting-edge production facility with stringent quality control, our advanced manufacturing units deliver world-class solutions that set new benchmarks in the industry.

At Damsun, we take pride in our people, processes, and passion for innovation, constantly pushing boundaries to redefine excellence.



## Testimonials

There are a lot of Windows suppliers in the market but what I have experienced with Lumani Systems will always be my best experience. The team, the workers, everyone were in sync so I didn't have to worry and I literally got my Home turned "New". Thank you team Lumani Systems.

**-Nippun Sharma**



We installed Schuco windows in our home and have been using them since 2017. We are very happy with the product, which is both durable and aesthetically pleasing. The response of the service team, when required, has been prompt and professional.

**-Roopinder Singh**



I recently engaged with Lumani Systems, for my home , and overall, I was impressed with their work. Their design team came up with unique and modern concepts that perfectly matched my vision for the space. The materials used were of top-notch quality, and the attention to detail in the execution was evident.

**-Jagmeet Sethi**



# Index

Residential Projects

01-30

Hospitality Projects

31-52

Commercial Projects

53-72

Why Us

73-74

System Technical Details

75-86

Our Clients

87-88

# RESIDENTIAL





Year	2024
Architect	Habitat Architects
Location	Ludhiana
System Color	Matt Grey
System Type	AS 39 SC.NI, SC 50.NI, AWS 50.NI, AW 40.NI



Year	2024
Architect	Habitat Architects
Location	Ludhiana
System Color	Matt Grey
System Type	AS 39 SC.NI, SC 50.NI, AWS 50.NI, AW 40.NI



Year	2022
Architect	Ar. Zafar Choudhary Habitat Architects
Location	Solan, Himachal Pradesh
System Color	Matt Grey
System Type	SC 50.NI, AOC 50, AWS 50.NI



Year	2019
Architect	Ar. Shiv Dada, Ar. Mohit Chawla 23DC Architects
Location	Panipat
System Color	Matt Grey
System Type	AS 39 SC.NI, AW 40.NI, ADS 50.NI



Year	2018
Architect	Ar. Ashwani Duggal Subash & Associates
Location	Chandigarh
System Color	Matt Grey
System Type	Classic Louvers & Façade



Year	2021
Architect	Ar. Thakur Udayveer Singh Space Race Architects
Location	Jalandhar
System Color	Sand Grey
System Type	ADS 50.NI, AWS 50.NI



Year	2017
Architect	Ar. Thakur Udayveer Singh Space Race Architects
Location	Jalandhar
System Color	Matt Grey
System Type	AS 39 SC.NI, AW 40.NI



Year	2022
Architect	Ar. Shyam Suryavanshi
Location	Jalandhar
System Color	Matt Grey
System Type	AW 40.NI, AS39 SC.NI



Year	2021
Architect	Ar. Thakur Udayveer Singh Space Race Architects
Location	Jalandhar
System Color	Sand Grey
System Type	AS 39 SC.NI, AWS 50.NI



Year	2022
Architect	Nirman Kala Architects
Location	Hisar
System Color	Matt Grey
System Type	AW 40.NI, AS 39 SC.NI



Year 2018  
 Architect Ar. Aman Aggarwal,  
 Charged Voids  
 Location Chandigarh  
 System Color Sand Grey  
 System Type AS 39 SC.NI



Year 2024  
 Architect Habitat Architects  
 Location Ludhiana  
 System Color White  
 System Type AS 39 SC.NI, AWS 40.NI





Year 2025  
 Architect Ar. Gunit Tuli, Off The Grid  
 Location Karnal  
 System Color Matt Grey  
 System Type AW 40.NI, AS 39 SC.NI



Year 2024  
 Architect Ar. Lakhbir Singh  
 Location Chandigarh  
 System Color Matt Grey  
 System Type AS 39 SC.NI, AW 40.NI





Year 2023  
 Architect Gagan Architects  
 Location Jalandhar  
 System Color Matt Grey  
 System Type AS 39 SC.NI, AWS 40.NI, ADS 50.NI



Year 2022  
 Architect Ar.Vikramjeet Singh Pannu  
 Location Chandigarh  
 System Color White  
 System Type AW 40.NI, AS 39 SC.NI, ADS 50.NI, AWS 50.NI





Year 2018  
 Architect Ar. Sanjeev Singla  
 Location Ludhiana  
 System Color Matt Grey  
 System Type AS 39 SC.NI



Year 2019  
 Architect Ar. Udayveer Singh Thakur,  
 Space Race  
 Location Jalandhar  
 System Color Black  
 System Type AS 39 SC.NI, AWS 50.NI,  
 ADS 50.NI



# HOSPITALITY





Year	2022
Architect	AND Studio
Location	Dehradun
System Color	Matt Grey
System Type	SC 50.NI, AOC 50, AWS 50.NI



Year	2021
Architect	Achal Kataria
Location	Dharamshala
System Color	Sparkling Grey
System Type	AS 39 SC.NI, AW 40.NI SC 50.NI



Year	2021
Architect	Ar Rahman
Location	Dehradun
System Color	White
System Type	SC 50.NI, AW 40.NI



Year	2022
Architect	AND Studio
Location	Dehradun Uttarakhand
System Color	Matt Grey
System Type	SC 50.NI, AOC 50, AWS 50.NI



Year	2022
Architect	Malik Architecture
Location	Rajbagh, Srinagar
System Color	Matt Grey
System Type	AS 39 SC.NI



Year	2022
Architect	R+D Studio
Location	Katra, Jammu & Kashmir
System Color	Matt Grey
System Type	AW 40.NI



Year	2023
Architect	Ar. Ranjodh Singh Habitat Architects
Location	Ludhiana
System Color	Matt Grey
System Type	ADS 50.NI



Year	2023
Architect	Ar. Alok Kathuria Habitat Architects
Location	Ludhiana
System Color	Matt Grey
System Type	FWS 50, ADS 50.NI



Year	2024
Architect	Ar. Sandeep Nandwani Aberrance Design Studio
Location	Shimla
System Color	Matt Black
System Type	FWS 50.NI, ADS 50.NI



Year	2018
Architect	Micromount Project Management Consultants
Location	Amritsar
System Color	Matt Grey
System Type	AW 40.NI, SC 50.NI

# COMMERCIAL





Year	2025
Architect	Ar. Sanjay Singh Arcop Associates
Location	Pune
System Color	Matt Grey
System Type	SC 50.NI, ADS 50.NI, AS 39 SC.NI



Year	2016
Architect	Ar. Ranjodh Singh Habitat Architects
Location	Budni, Bhopal
System Color	Green
System Type	AS 39 SC.NI, AW 40.NI



Year	2021
Architect	Dham Consultants
Location	Ludhiana
System Color	Matt Grey
System Type	AS 39 SC.NI, AWS 50.NI



Year	2018
Architect	Ar. Praneet Babbar
Location	Amritsar
System Color	Anodic Bronze
System Type	AW 40.NI, SC 50.NI



Year	2021
Architect	Ar. Rajeev Mahajan Adharshila Architects
Location	Chandigarh
System Color	Matt Grey
System Type	SC 50.NI, ADS 50.NI



Year	2017
Architect	Ar. Ashutosh Handa Designer Inc.
Location	Zirakpur
System Color	White
System Type	SC 50.NI



Year	2025
Location	Ludhiana
System Color	Matt Grey
System Type	AW 40.NI, AS 30 SC.NI, AS 39 SC.NI



Year	2023
Architect	Ar. Alok Kathuria - Habitat
Location	Ludhiana
System Color	Matt Black
System Type	AW 40 NI, AS 39 SC.NI



Year 2021  
 Architect Ar. Shiv Dada & Ar. Mohit Chawla  
 23 DC Architects  
 Location Hoshiarpur  
 System Color Matt Grey  
 System Type ASS 50.NI, SC 50.NI,  
 ASS 39 PD.NI, AW 40.NI



Year 2021  
 Architect Ar. Gaurav Singh  
 Location Dehradun Uttarakhand  
 System Color Anodized Champagne  
 System Type SC 50 NI, AW 50 NI, ADS 50 NI



## Why Choose Us?

*What features should you look for in windows, doors, and façades?  
Perhaps we can change your mind.*



### Versatile Design Options

Multiple track configurations ensure seamless adaptability to different architectural styles.



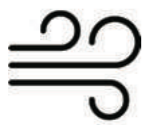
### Exceptional Water Tightness

Engineered to withstand up to 600 Pa, preventing leaks and ensuring lasting durability.



### Sleek & Modern Aesthetics

Slim face widths offer a contemporary look without compromising on strength.



### Superior Wind Load Resistance

Tested for pressures up to 3000 Pa, ensuring performance in extreme conditions.



### Advanced Sound Insulation

Reduces noise by up to 33 dB, creating a peaceful and comfortable indoor space.



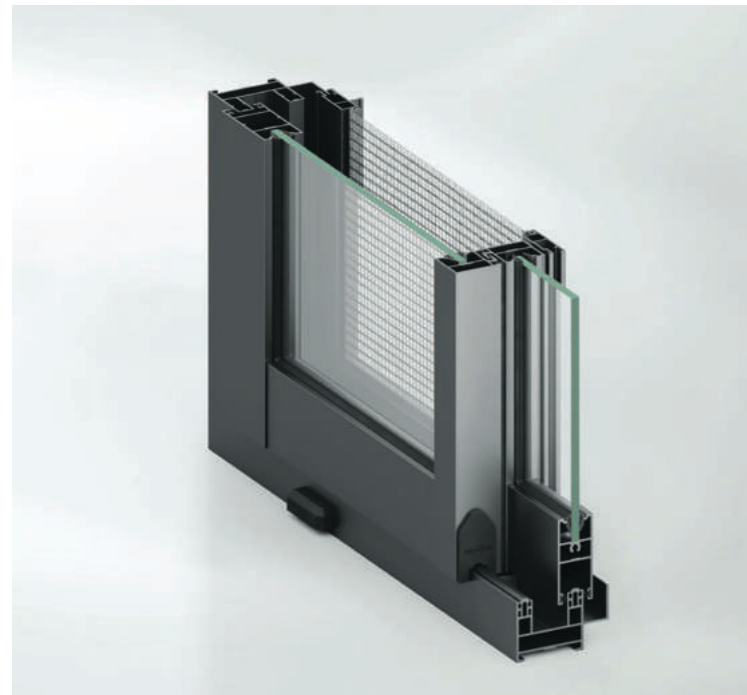
*Reduces noise by up to 33 dB, creating a peaceful and comfortable indoor space.*

# System Technical Details

## AS SC 30.NI

The Schüco AS SC 30.NI aluminium sliding system pairs minimal sightlines with expansive glazing to deliver an optimal balance of aesthetics and performance for modern residential developments. Its versatile configurations and refined design language empower architects to articulate their vision with clarity and precision.

- Double- and triple-track options addressing diverse residential typologies
- Integrated internal fly-mesh enabling ventilation without compromising comfort
- Flexible fixed-light configurations at top, bottom, and sides for broader design adaptability

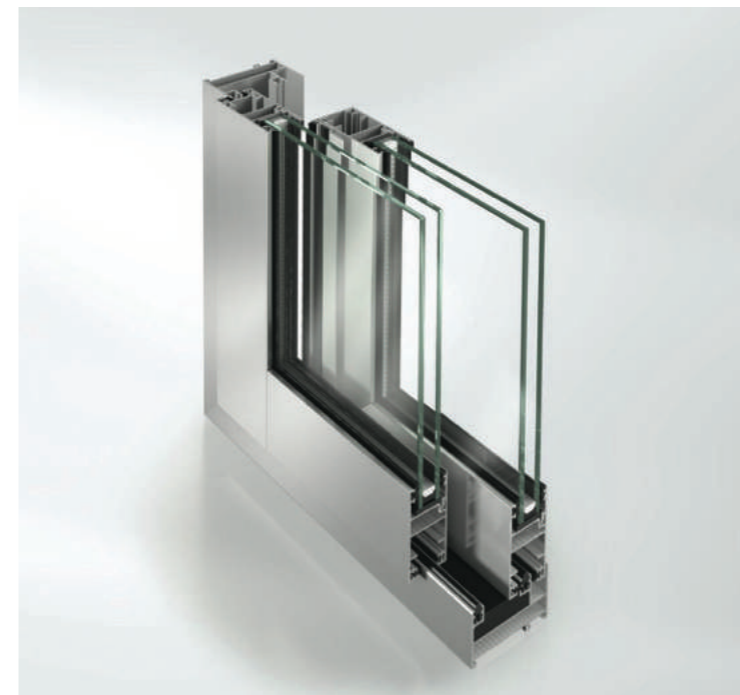


Maximum Vent Height	2400 mm
Maximum Vent Width	1200 mm
Maximum Weight	Upto 120 Kg
Max. Glass Thickness	22 mm
Sound Insulation	30 dB
Water Tightness	Upto 450 Pa
Wind Load	Upto 2700 Pa
Air Permeability	Upto 600 Pa

## AS SC 32.NI

The Schüco ASS 32 SC is a lightweight, thermally insulated sliding system engineered for high-transparency applications, delivering an elevated glass-to-frame ratio ideal for warmer climate zones.

- Narrow face widths with superior thermal insulation for warm climates
- Double- and triple-track configurations enabling expansive, transparent design solutions
- Precision stainless steel/aluminium tracks with bearing-mounted rollers for smooth, silent operation
- Square-cut vent frame joints (without glazing beads) simplifying fabrication and accelerating installation

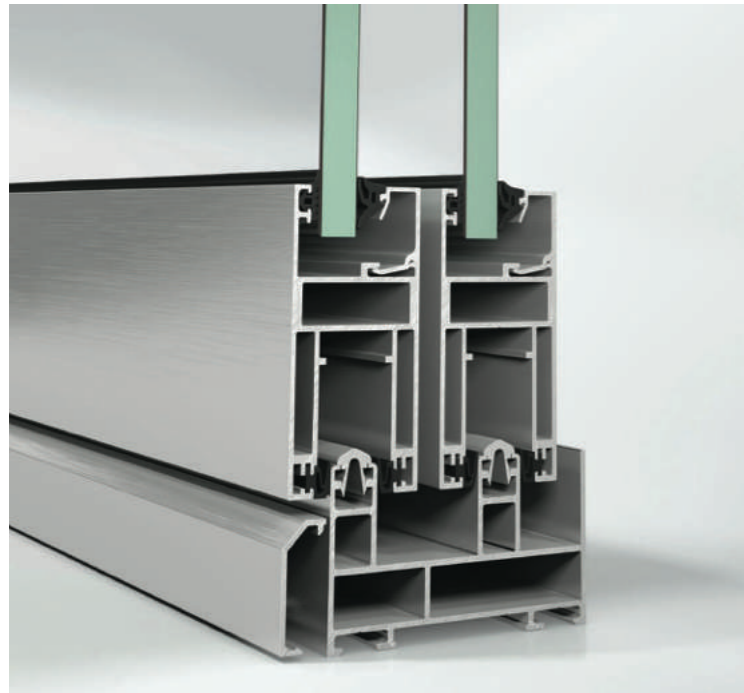


Maximum Vent Height	3048 mm
Maximum Vent Width	1400 mm
Maximum Weight	Upto 120 Kg
Max. Glass Thickness	24 mm
Sound Insulation	30 dB
Water Tightness	Upto 450 Pa
Wind Load	Upto 2500 Pa
Air Permeability	Upto 600 Pa

## AS 39 SC.NI

The Schüco TropTec™ AS 39 SC.NI (Non Insulated) is an aluminium sliding system with a high degree of flexibility to meet the requirements in functionality as well as design. It combines narrow face widths with proportionally more glass for sophisticated construction projects.

- Snap on track profiles to build more than 4 track sliding systems
- 90° corner sliding option
- Flush threshold outer frame option
- High level of performance in wind load resistance, water tightness and air tightness

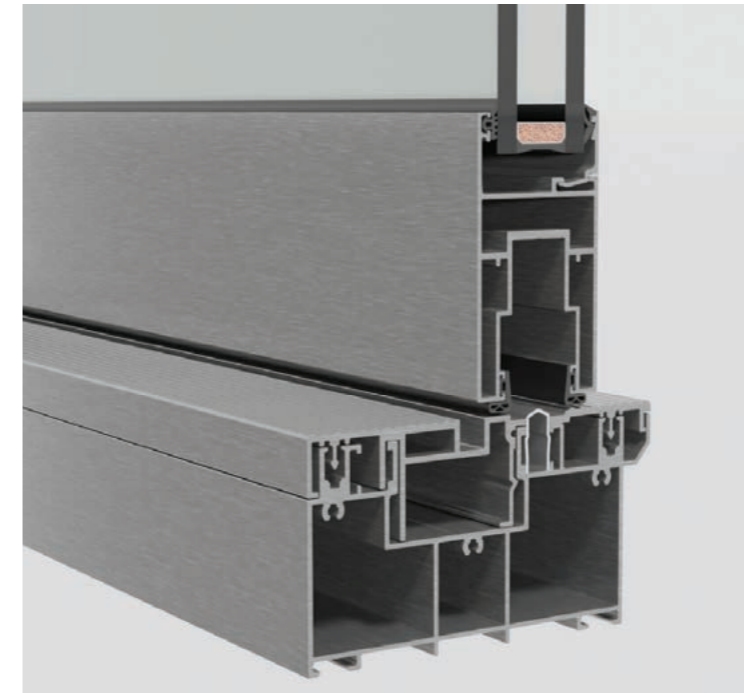


Maximum Vent Height	3600 mm
Maximum Vent Width	2500 mm
Maximum Weight	Upto 200 Kg
Max. Glass Thickness	28 mm
Sound Insulation	36 dB
Water Tightness	Upto 600 Pa
Wind Load	Upto 3000 Pa
Air Permeability	Upto 600 Pa

## AS ICD 50.NI

AS ICD 50.NI sliding and lift-and-slide system which provides a high-performance with a wide variety of architectural possibilities.

- Wide variety of opening types for single, double, triple or multi-track outer frames.
- Easy, smooth and silent operation with a high-performance system.
- Can be used with classic or slim interlock section.
- In-wall solution with very flexible design, making adjustments easily on site.

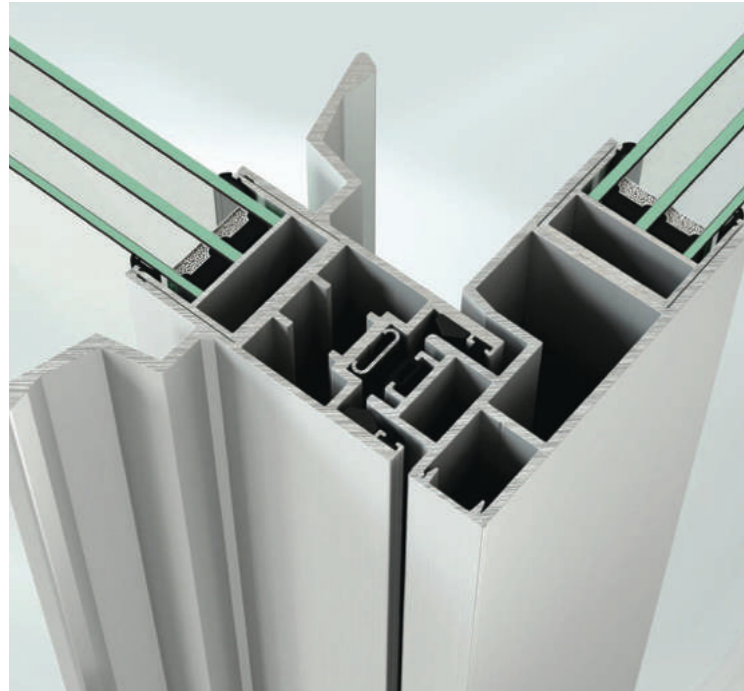


Maximum Vent Height	4500 mm
Maximum Vent Width	3000 mm
Maximum Weight	Upto 500 Kg
Max. Glass Thickness	36 mm
Sound Insulation	40 dB
Water Tightness	Upto 900 Pa
Wind Load	Upto 3000 Pa
Air Permeability	Upto 600 Pa

## AS 39 PD.NI

Designed for spaces without thermal insulation needs, the Schüco ASS 39 PD.NI offers floor-to-ceiling glazing for seamless indoor-outdoor transitions. Its handle-free design and clean sightlines create a minimal, modern aesthetic.

- Handle-free or continuous pull grip for a sleek look
- Double, triple-track options with 90° corner opening
- Integrated flyscreen & optional inside/outside locking for added comfort and security
- Certified to European and AAMA standards



Maximum Vent Height	3500 mm
Maximum Vent Width	3000 mm
Maximum Weight	Upto 300 Kg
Max. Glass Thickness	32 mm
Sound Insulation	40 dB
Water Tightness	Upto 300 Pa
Wind Load	Upto 3000 Pa
Air Permeability	Upto 600 Pa

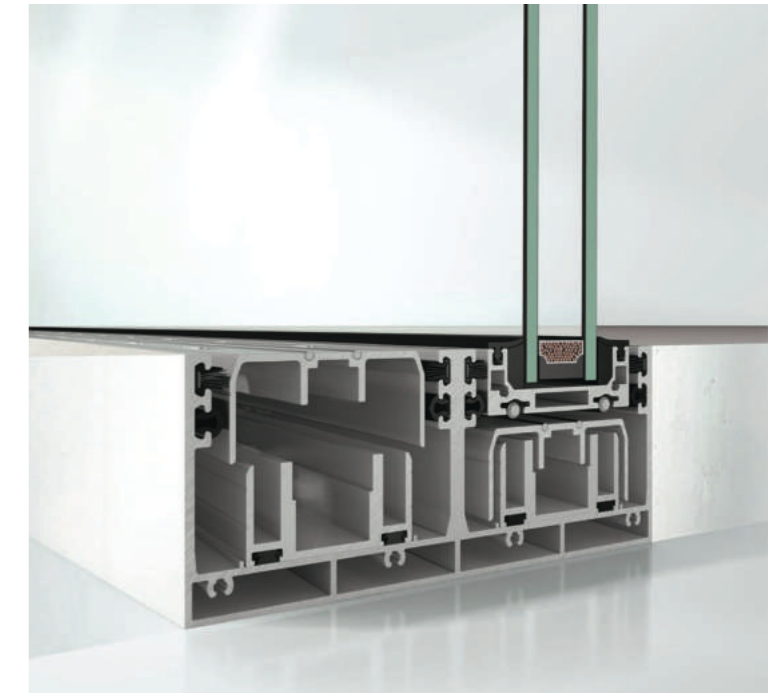
## AS PD 70.NI

Frameless Views, Maximum Light

The Schüco Panorama Design sliding system offers floor-to-ceiling glazing with ultra-slim profiles, creating seamless transitions between indoors and outdoors. Its concealed frame and innovative dynamic threshold ensure both elegance and performance.

- Concealed frames for unobstructed panoramic views
- Patented dynamic threshold for a flush floor finish
- Overlapping interlock for consistent slim sightlines even in multi-vent designs
- Integrated handle for smooth and effortless operation

Maximum Vent Height	4500 mm
Maximum Vent Width	3000 mm
Maximum Weight	Upto 500 Kg
Max. Glass Thickness	40 mm
Sound Insulation	40 dB
Water Tightness	Upto 450 Pa
Wind Load	Upto 3000 Pa
Air Permeability	Upto 600 Pa



## FWS 35 PD

Designed for maximum transparency, the FWS 35 PD façade system offers sleek all-glass corners without vertical mullions, creating uninterrupted views for high-end residential and commercial spaces.

Integrated solutions for sun shading and burglar resistance enhance both comfort and security.

- All-glass corners without visible profiles for maximum transparency
- Supports Schüco sun shading systems for reduced cooling loads
- High thermal insulation with minimal thermal bridging
- Ideal for modern, light-filled architecture



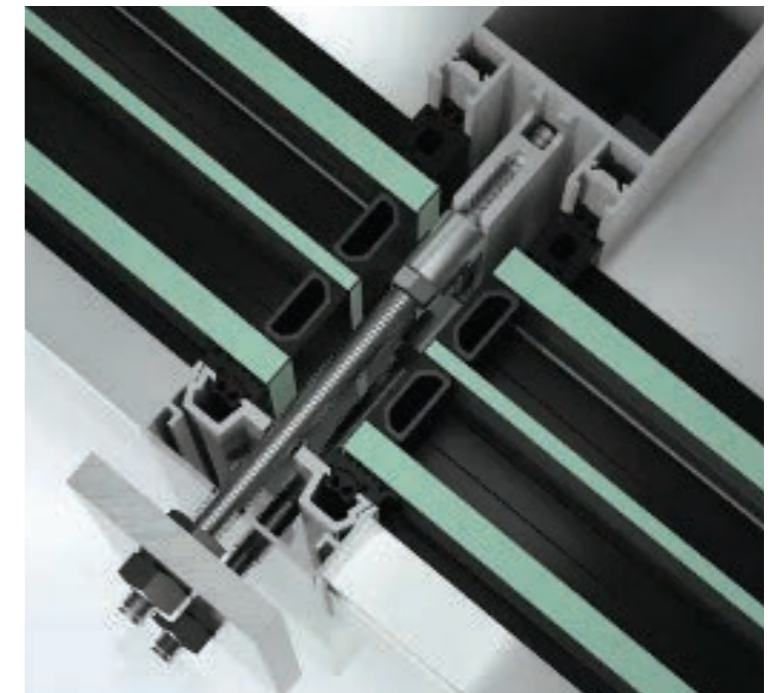
Face Width	35 mm
Maximum Weight	Upto 400 kg
Max. Glass Thickness	50 mm
Water Tightness	Upto 1200 Pa
Wind Load	Upto 3000 Pa
Air Permeability	Upto 600 Pa

## FWS 50

The Schüco FWS 50 is a flexible façade and skylight system, offering a wide range of design options and efficient installation. Its integrated spandrel safety barrier supports floor-to-ceiling openings while maintaining a sleek look

- Integrated spandrel safety barrier for clean aesthetics
- Combines easily with Schüco windows, doors, and sliders
- Cradle to Cradle Certified™ (Silver)

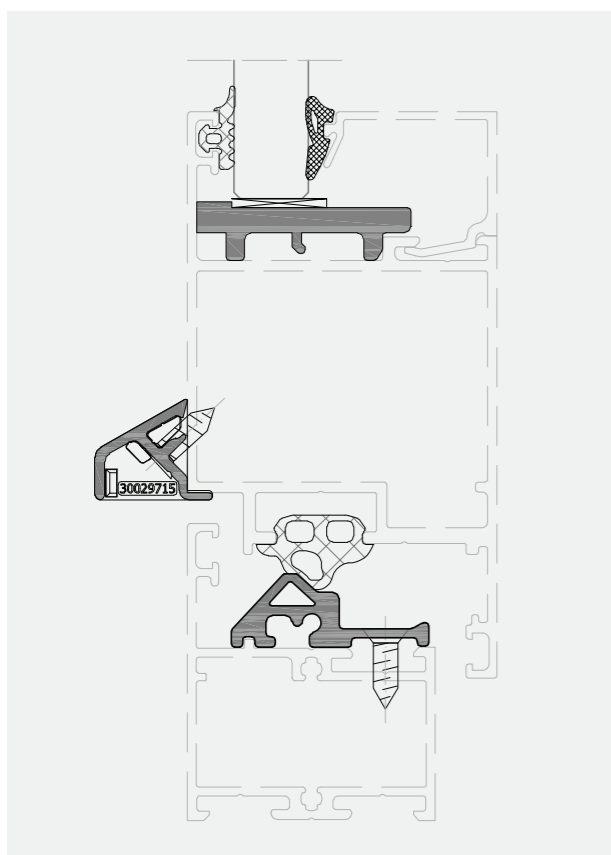
Face Width	50 mm
Maximum Weight	Upto 1080 kg
Max. Glass Thickness	62 mm
Water Tightness	Upto 1200 Pa
Wind Load	Upto 3000 Pa
Air Permeability	Upto 600 Pa



## ADS 40

This non-insulated aluminium door system is purpose-built for both interior and exterior applications, delivering a balanced blend of versatility, durability, and clean design.

- Single-leaf aluminium system for interior and exterior use.
- Multiple inward and outward opening configurations.



Max. vent height	2750 mm
Max. vent width	1100 mm
Max system basic depth	40 mm
Watertightness	300 Pa
Max. vent weight	100 kg
Max. glass/panel thickness	28 mm
Surface finishes	Powder, Anodised
Air tightness	300 Pa
Wind load resistance	3000 Pa

## ADS 50.NI

The Schüco ADS 50.NI is a non-insulated aluminium door system, designed for economical interior solutions. It features narrow face widths and is ideal for applications like door constructions, partition walls, draught lobbies, and reception areas..

- Narrow face widths for a sleek design
- Flat thresholds for easy access
- Versatile opening types: single/double-leaf, panic doors, swing doors, and all-glass doors
- Burglar resistance (DIN EN 1627)



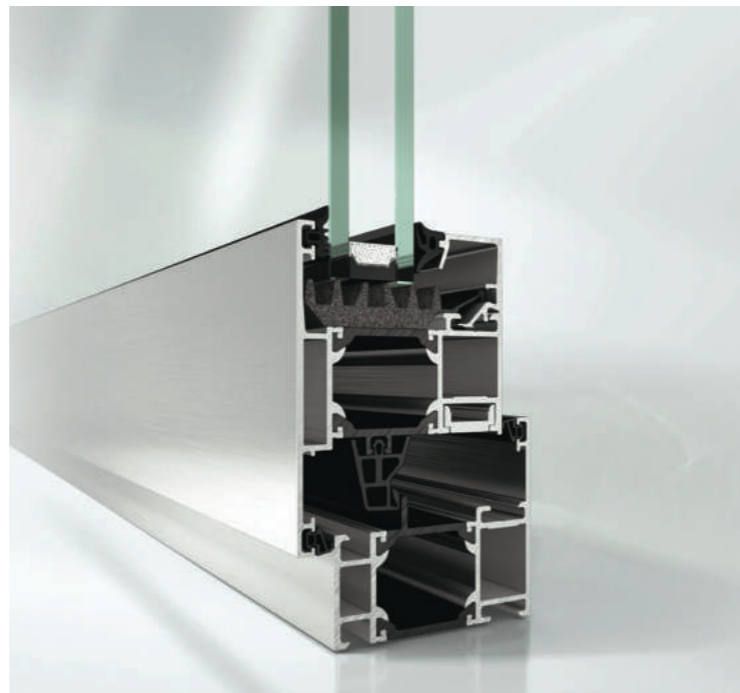
Maximum Vent Height	3000 mm
Maximum Vent Width	1200 mm
Max. Glass Thickness	32 mm
Max. Weight (Per Shutter)	120 Kg
Sound Insulation	Upto 43 dB
Water Tightness	Upto 600 Pa
Wind Load	Upto 3000 Pa
Air Permeability	Upto 600 Pa

## AWS 65

The Schüco AWS 65 is a thermally insulated aluminium window system designed for flexibility, performance, and modern aesthetics. It offers a wide range of solutions for punched openings, ribbon windows, façade inserts, and seamless combinations with Schüco door systems.

- Wide range of opening types: side-hung, turn/tilt, double-vent, barrier-free doors
- Compatible with Schüco TipTronic SimplySmart and AvanTec SimplySmart for large vent sizes and automation
- Certified burglar resistance (DIN EN 1627 / PAS 24)
- Extensive profile variety for design flexibility

Maximum Vent Height	2500 mm
Maximum Vent Width	1700 mm
Max. Glass Thickness	26 mm
Max. Weight (Per Shutter)	160 Kg
Sound Insulation	Upto 43 dB
Water Tightness	Upto 600 Pa
Wind Load	Upto 3000 Pa
Air Permeability	Upto 600 Pa

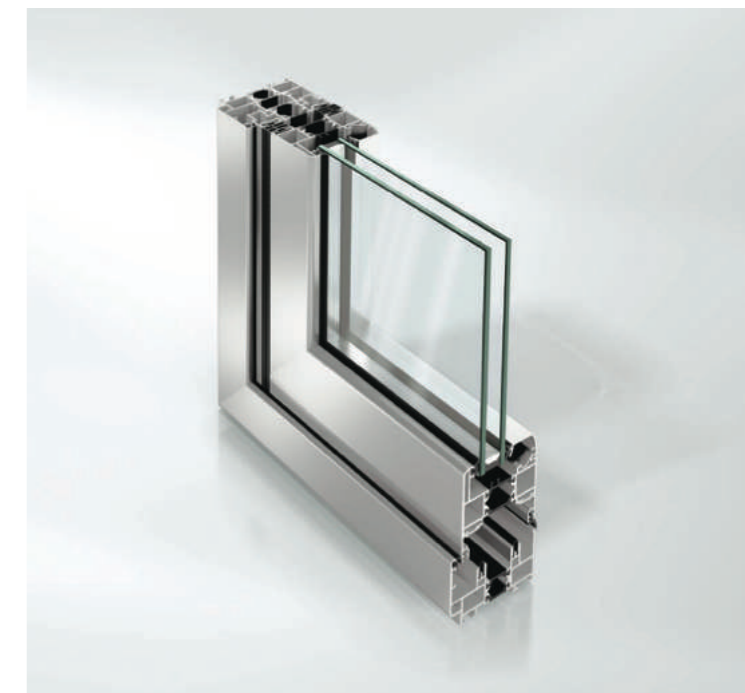


## ASS 70 FD

The Schüco ASS 70 FD bi-fold system offers slim profiles, excellent weathertightness, and flexible design for outdoor spaces. Its smooth-folding vent stacks and 90° corner opening create wide, unobstructed transitions - with the option of a flat, thermally insulated threshold for barrier-free comfort.

- Slim profiles with high weathertightness
- Flat threshold for barrier-free access
- Flexible vent stacking: left, right, inward or outward
- Magnetic retaining catch and sleek flat door handle
- Dual-colour design for inside and outside surfaces

Maximum Vent Height	3000 mm
Maximum Vent Width	1500 mm
Max. Glass Thickness	45 mm
Max. Weight (Per Shutter)	150 Kg
Sound Insulation	Upto 43 dB
Water Tightness	Upto 600 Pa
Wind Load	Upto 1800 Pa
Air Permeability	Upto 600 Pa



# Our Clients





**Lumani**  
SCHÜCO German Window System

0161-2400020, 88720-50715

care@damsungroup.com | www.lumanisystems.com