



## Lumani Schüco: Introduction

Employees worldwide  
Mitarbeiter/-innen  
weltweit

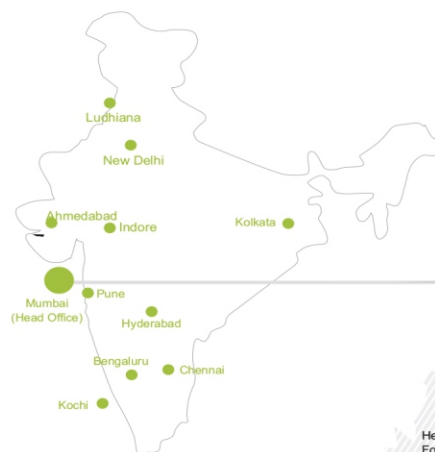
ca. **6.330**

Germany/Deutschland

ca. **3.940**

International

ca. **2.390**



Head Office Bielefeld  
Founded: 1951 in East-Westphalia  
Unternehmenszentrale Bielefeld  
Gegründet: 1951 in Ostwestfalen

Expertise  
Window systems, door systems  
and façade systems  
Kompetenzen  
Fenstersysteme, Türsysteme  
und Fassadensysteme

MORE THAN  
MEHR ALS **80**  
COUNTRIES  
LANDER

**47**  
SITES IN  
COUNTRY

**12.000**  
PARTNER



## Schüco International KG

From : 1951 (Humble Beginnings)



... to GLOBAL leader



Schüco Corporate Building Bielefeld Germany

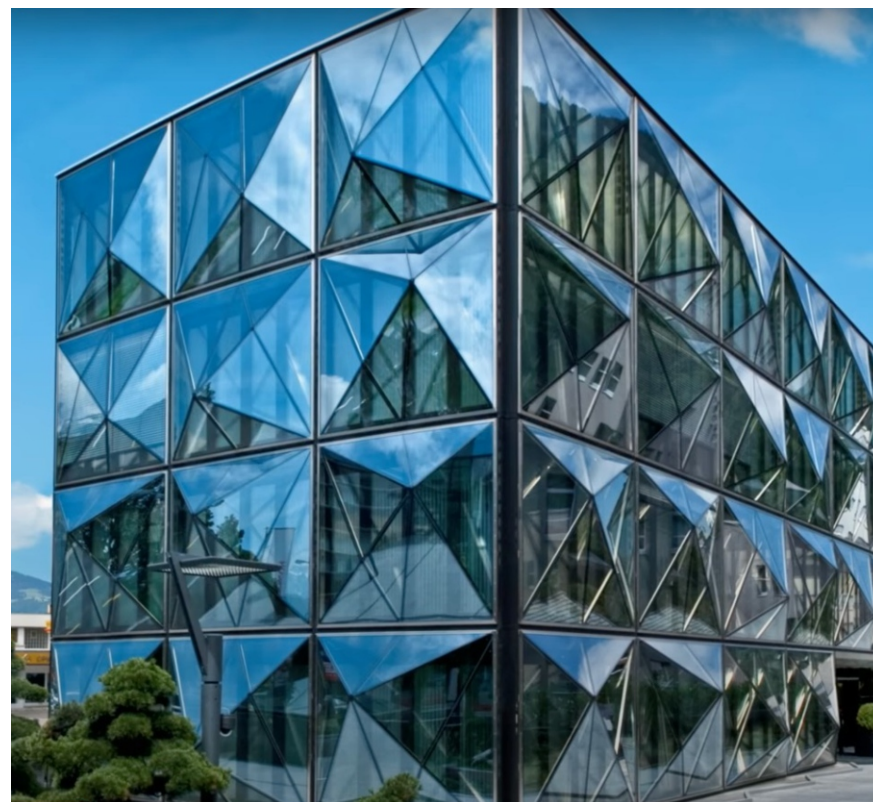
## About Lumani

LUMANI Systems, a member of the Damsun Group and an exclusive partner of SCHUCO-GERMANY, with headquarters in Ludhiana, and operates sales and services in various states of India such as Punjab, Himachal Pradesh, Haryana, Uttarakhand, Rajasthan, Leh Ladakh and J&K.

LUMANI Schuco is a leading provider of high quality aluminium solutions for windows, doors, skylights, louvers and facades, used in buildings worldwide. These products meet the most stringent requirements in terms of design, comfort, performance, and security, with excellent sound and thermal insulation to make your home energy-efficient.

Schueco, along with its global network of architects and customers, creates sustainable building envelopes that prioritize people and their needs, while maintaining harmony with nature and technology.

LUMANI's aluminum windows and doors provide superior thermal insulation, sound insulation, dust insulation, and water tightness, constantly pushing the boundaries of innovation. LUMANI Schuco utilizes raw materials efficiently while delivering window and door designs that exceed industry standards. The inter-compatible components, along with comprehensive testing and certification of system features, ensure a high level of quality.



### VISION

Committed to becoming a sustainable global business by focusing on excellence, technology, and innovation.

### VALUES

Our values are Leadership, Commitment, Trust & Team Work.

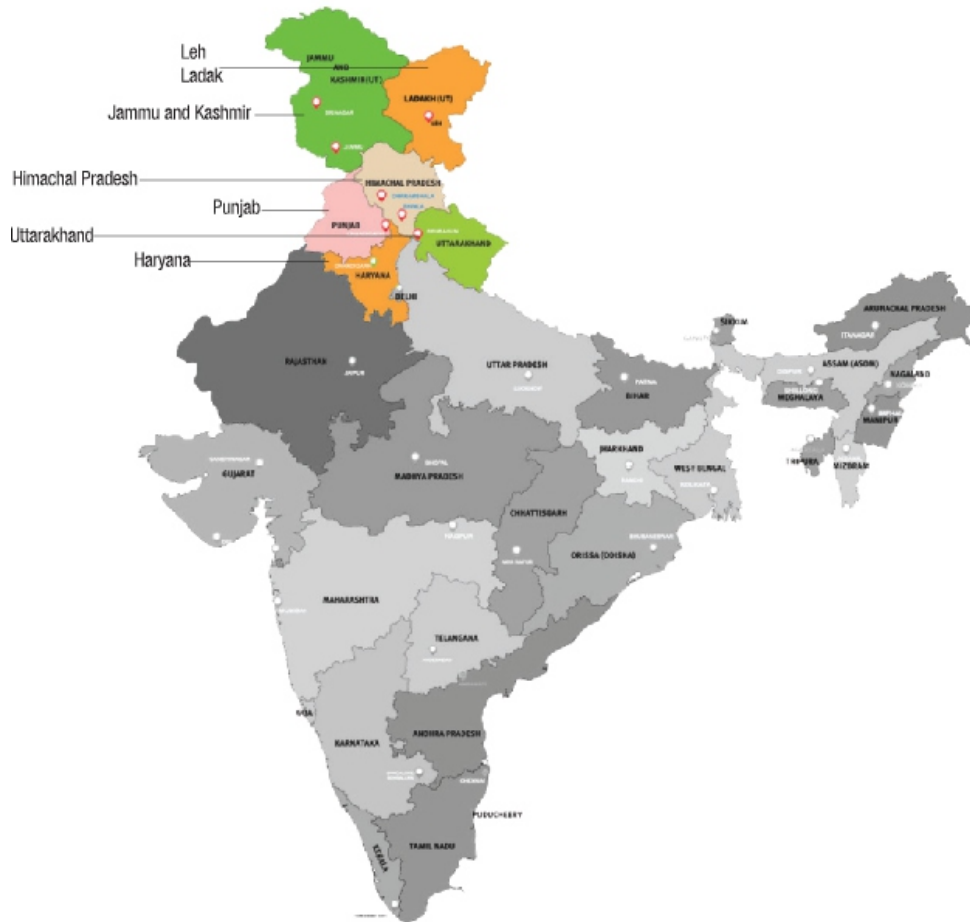
### BRAND PROMISE

"10 Year" Assured Service Guaranteed  
"Ownership Pride : Lumani"  
"High Standards of Quality"



## NETWORK

### PROUDLY SERVING THE 'CROWN' OF INDIA FROM 2013



- Amritsar
- Ambala
- Bathinda
- Chandigarh Tricity
- Dharamshala
- Dehradun
- Ganganagar
- Haridwar
- Hoshiarpur
- Jammu
- Jalandhar
- Katra
- Ludhiana
- Leh Ladakh
- Malout
- Massoorie
- Panipat
- Patiala
- Pathankot
- Rudarpur
- Rishikesh
- Roorkee
- Rohtak
- Suratgarh
- Sirsa
- Srinagar
- Shimla
- Yamunanagar

## OUR MANAGEMENT



**Puneet Garg**  
Founder and CMD



**Brij Bhushan Bansal**  
Co-Founder and Director



**Navneet Garg**  
Co-Founder and Director



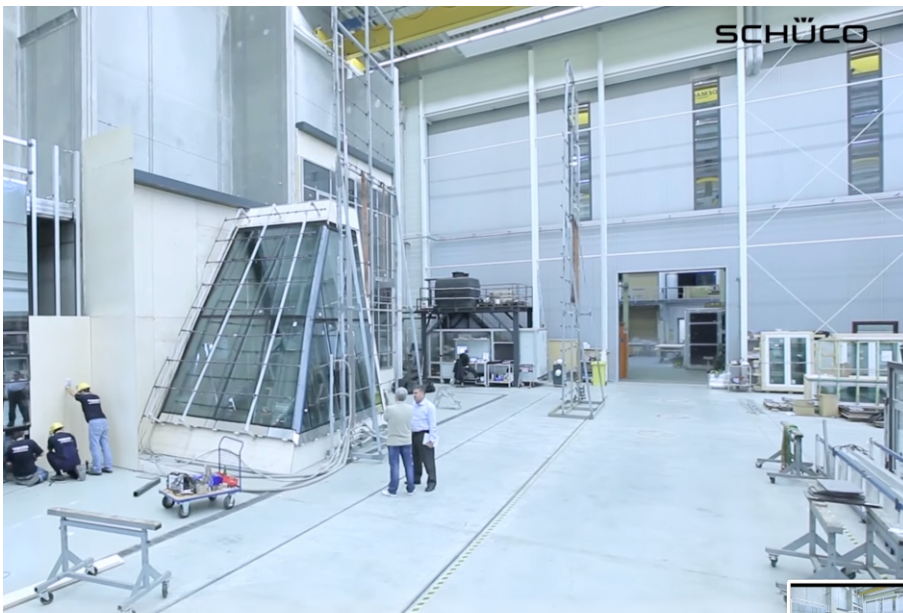
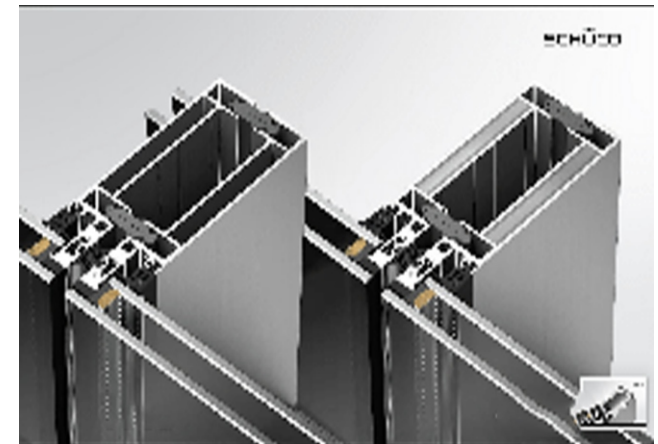
**Puneet Bhagat**  
Director

## USP of LUMANI SCHUCO SYSTEM

- Tested & certified systems
- Fully integrated German solutions
- Designed as per Indian weather conditions
- Latest Slim line systems
- Single source of supply
- 10 years reliable warranty
- Sales & Technical Assistance

## INSULATION

- Sound
- Dust
- Insects
- Thermal-Heat & Cold
- Wind
- Moisture
- Unauthorized Entry







Project Type	Commercial – Hyatt Regency
Year	2022
Architect	AND Studio
Location	Dehradun, Uttarakhand
System color	Matt Grey
System Type	SC 50.NI, AOC 50, AWS 50 NI



Project Type	Residential, Anil Sikka
Year	2022
Architect	Ar. Ranjodh Singh, Habitat design
Location	Phagwara
System color	Matt Grey
System Type	ASS 50.NI AS 39 SC.NI AW 40.NI







Project Type	Residential, Baba dairy
Year	2022
Architect	Ar. Vikramjeet Singh Pannu
Location	Chandigarh
System color	White
System Type	AW 40.NI, AS 39 SC.NI, ADS 50.NI, AWS 50.NI





Project Type	Residential, Anugraha
Year	2022
Architect	Ar. Udayveer Singh Thakur, Space Race
Location	Chandigarh
System color	Matt Grey
System Type	AS 39.NI, AWS 50.NI, ADS 50





Project Type	Storii by ITC Amoha Retreat
Year	2021
Architect	Ar. Achal Kataria, New Delhi
Location	Dharamshala, Himachal Pradesh
System color	Sparkling Grey
System Type	AS 39 SC.NI, AW 40.NI SC 50.NI





Project Type	Commercial – MG Contractors Pvt. Ltd
Year	2021
Architect	Ar. Rajeev Mahajan, Aadharshila Architects
Location	Chandigarh
System color	Matt Grey
System Type	SC 50NI ADS 50.NI





Project Type	Commercial – DIT University
Year	2021
Architect	Ar. Gaurav Singh
Location	Dehradun, Uttarakhand
System color	Anodized Champagne Color
System Type	SC 50NI, AW 50NI, ADS 50NI



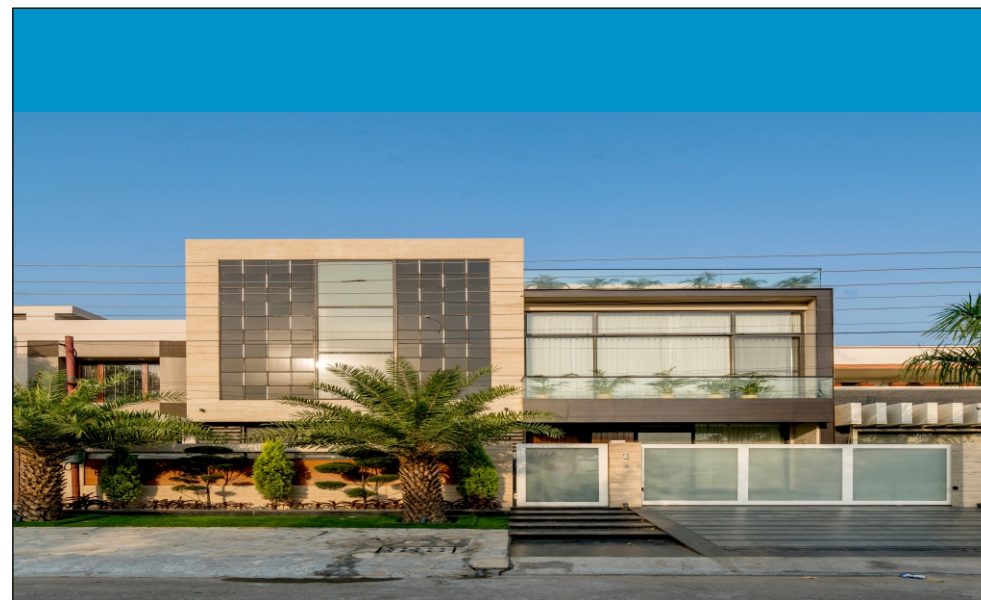


Project Type	Commercial – Fairfield by Marriott
Year	2021
Architect	Ar Rahman , New Delhi
Location	Dehradun, Uttarakhand
System color	White
System Type	SC50.NI, AW40.NI





Project Type	The Aventador Office Building, Commercial
Year	2021
Architect	23DC Architects, Ar. Shiv Dada, Ar. Mohit Chawla
Location	Hoshiarpur
System color	Matt Grey
System Type	ASS 50.NI, SC 50.NI, ASS 39 PD.NI, AW 40.NI



Project Type	Residential, Aggarwal House
Year	2021
Architect	Ar. Udayveer Singh Thakur, Space Race
Location	Jalandhar
System color	Sand Grey
System Type	AS 39, AWS 50.NI





Project Type	Commercial, Modern Indian Palace
Year	2021
Architect	Ar. Udayveer Singh Thakur, Space Race
Location	Jalandhar
System color	Sand Grey
System Type	ADS 50.NI, AWS 50.NI



Project Type	"CARBONADO" THE PRIME JWEEL OF Schüco GLOBAL CALENDAR, TWO YEARS IN A ROW"
Year	2019
Architect	23DC Architects, Ar. Shiv Dada, Ar. Mohit Chawla
Location	Panipat
System color	Grey
System Type	AS 39 SC.NI, AW 40.NI, ADS 50.NI





Project Type	Residential, Universal Design Above
Year	2019
Architect	Ar. Udayveer Singh Thakur, Space Race
Location	Jalandher
System color	Black
System Type	AS 39 AWS 50.NI, ADS 50.NI







Project Type	Residential
Year	2018
Architect	Ar. Varun Khosla, Khosla & Associates
Location	Ludhiana
System color	Dark Wenge
System Type	AS 39 SC.NI, AW 40.NI ADS 50.NI, SC 50.NI







Project Type	Commercial – Courtyard Marriot
Year	2018
PMC	Micromount Project Management Consultants
Location	Amritsar
System color	Matt Grey
System Type	AW 40.NI, SC 50.NI



Project Type	Commercial – Mukut House
Year	2018
Architect	Ar. Praneet Babbar
Location	Amritsar
System color	Anodic Bronze
System Type	AW 40.NI, SC 50.NI





Project Type	Centra Green Abhay Oswal Group
Year	2017
Architect	Dham Consultants
Location	Ludhiana
System color	Grey
System Type	AS 39 SC.NI, AW 40.NI



Project Type	Contemporary Above
Year	2017
Architect	Ar. Udayveer Singh Thakur, Space Race
Location	Jalandhar
System color	Grey
System Type	AS 39 SC.NI, AW 40.NI





Project Type	Commercial – The Hermitage Park
Year	2017
Architect	Ar. Ashutosh Handa, Designer Inc.
Location	Zirakpur
System color	White
System Type	SC 50.NI Facade

Project Type	Commerical, Nik Bakers
Year	2017
Architect	Ar. Manmohan Khokhar
Location	Delhi
System color	Matt Black
System Type	AW 40.NI, ADS 50.NI





Project Type	Commercial
Year	2016
Architect	Ar. Rajeev Mahajan, Aadharshila Architects
Location	Chandigarh
System color	Sparkling Grey
System Type	SC 50.NI, ADS 50.NI





Project Type	Residential
Year	2016
Architect	Ar. Mandeep Singh, Living Space
Location	Malerkotla
System color	Sparkling Grey
System Type	SC 50.NI, AS 39 SC.NI, AW 40.NI



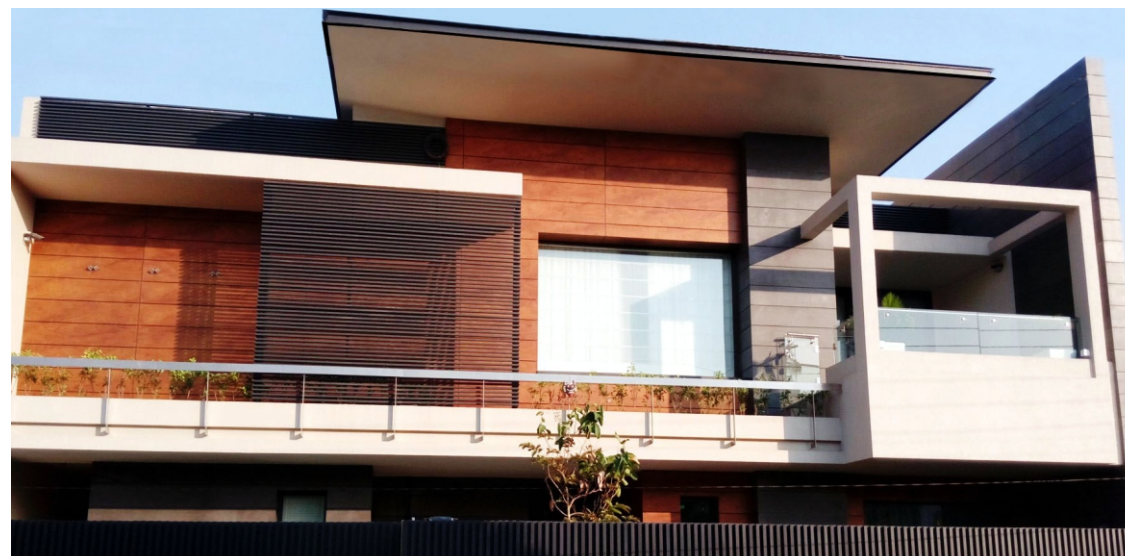
Project Type	Trident Budni, Bhopal
Year	2016
Architect	Ar.Ranjodh Singh, Habitat Design
Location	Budni, Bhopal
System color	Green
System Type	AS 39 SC.NI, AW 40.NI





Project Type	Residential
Year	2015
Architect	Ar. Ranjodh Singh, Ar. Narinder Singh, Habitat
Location	Ludhiana
System color	Sparkling Grey
System Type	Troptec- AS 39 SC.NI, AW 40.NI

Project Type	Residential
Year	2015
Architect	Ar. Ranjodh Singh, Habitat Design
Location	Amritsar
System color	Schuco Grey
System Type	ASS 50.NI, AWS 50.NI, ADS 50.NI





Project Type	Residential
Year	2015
Architect	23 DC Architects, Ar. Shiv Dada, Ar. Mohit Chawla
Location	Jalandhar
System color	Sparkling Grey
System Type	Facade- AS 39 SC.NI, AW 40.NI, AWS 50.NI, SC 50.NI

Project Type	Residential
Year	2015
Architect	Ar. Chetan Ahluwalia, Architect File
Location	Chandigarh
System color	Grey Sahara
System Type	AS 39 SC.NI, AW 40.NI







Project Type	Residential
Year	2015
Architect	23 DC Architects, Ar. Shiv Dada, Ar. Mohit Chawla
Location	Jalandhar
System color	Grey
System Type	AS 39 SC.NI, AW 40.NI, ADS 50.NI

Project Type	Residential, Upcoming Project
Year	2023
Architect	Ar. Samridh Aneja, Minimalist Architecture & Design Studio
Location	Ludhiana
System color	Matt Grey
System Type	PD 70, PD 39





## Facades





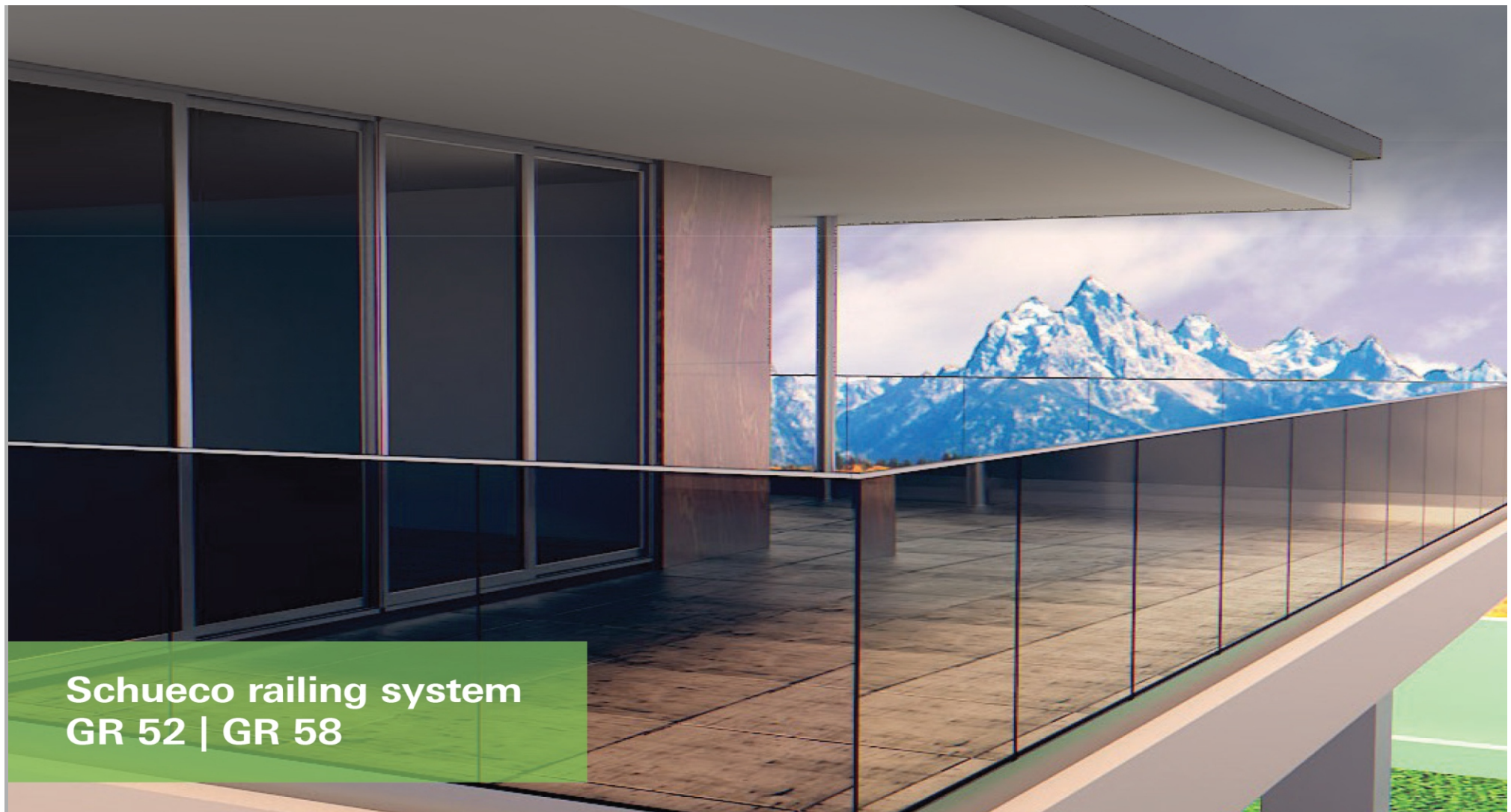
## Skylights



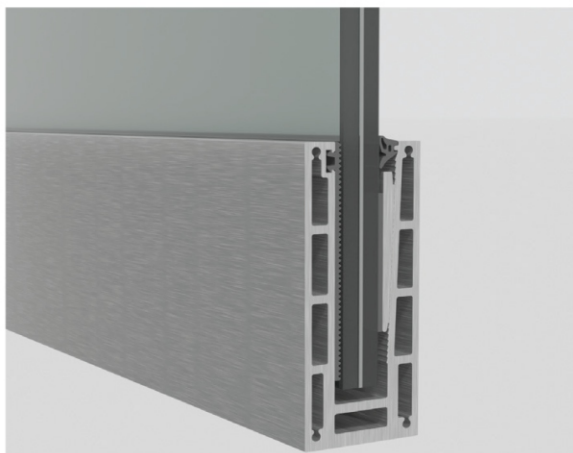
Project Type	Residential
System color	Grey
System Type	ALB Passive 155mm Lovers SC 50.NI, AW 40.NI, ASS 50

## Louvers

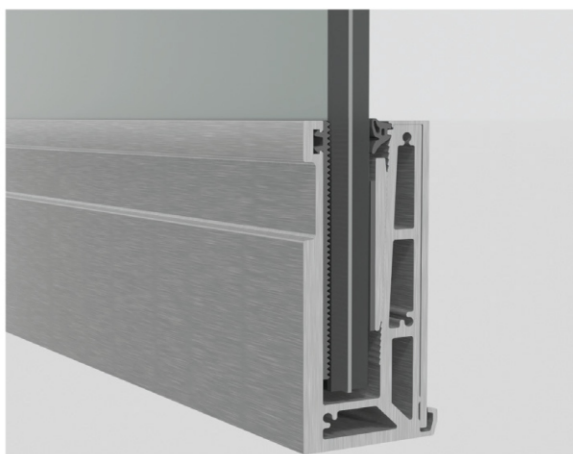




**Schueco railing system  
GR 52 | GR 58**



Floor mounted railing



Wall mounted railing

## Schueco railing system GR 52 | GR 58

The new Schueco railing system combines aesthetics, quality, minimalist design and safety, making it an excellent choice. This system combines the elegance and visual appeal of an all-glass solution with simple fabrication and installation. It also provides maximum protection as a safety barrier. The sturdy profiles and connections ensure the necessary safety for internal and external applications.

### Minimalistic design

With less number of components, this system has a minimalistic design while serving the necessary function.

### Tested for safety

All variants of this system have been third-party tested to provide maximum safety and assurance of reliability to the occupant.

### Code-compliance

The system has been designed and tested to ensure compliance with local building codes.

### Offerings

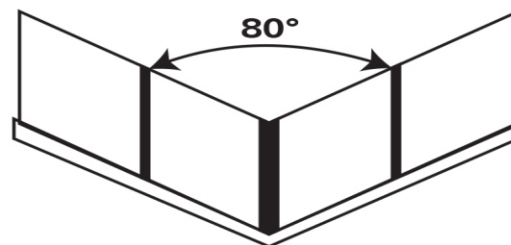
This system fulfils all the needs of a glass railing, with the options of floor-mounted, face-fitted versions that can be used for straight and corner solutions.



## Design typology



Straight railing



Corner railing

## System data

**52 mm**

Profile depth

**58 mm**

Profile depth

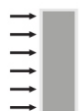
**Max 1500 kg**

Panel height

**17.52 mm**

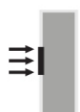
Glass thickness

## Schueco certified performance



**1000 N**

Horizontal UDL line load, ASTM



**3000 N / 2000 N**

Infill UDL, ASTM



**1000 N**

Concentrated point load, ASTM



**100 lbs / 45 kg**

Impact load

## The Schueco advantage

An Integrated design, materials and service approach to deliver the highest global standards to your home



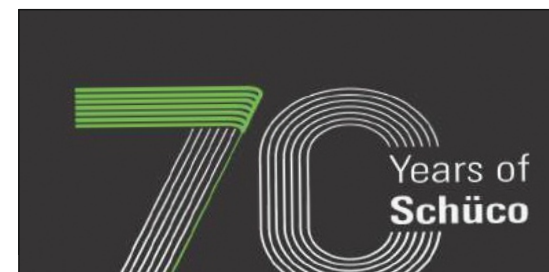
### High-performance materials & processes

High-EPDM-content gasket with peroxide curing technology, integrated drainage system, and custom brush seal, all contribute to best-in-class air, water, wind and acoustic performance.



### Accessory specifications & testing

Engineered, high-quality materials designed for smooth operation, corrosion resistance and durability with meticulous testing of all components, ensure consistent long-term performance.



### Design rigor & philosophy

Each system from Schueco brings 70 years of global experience in structural detailing and design innovation.



### Last-mile training and support

Schueco provides in-depth technical and hands-on training to the fabricator partners and certify them to deliver outstanding buildings





## INTERNAL PARTITIONS

Installation

Assemble

Subject to technical changes.

**SLIDING DOOR: PLANNING**  
SKYLINE SLIDING SYSTEM 4200

# The Product



Transparent partitions add light  
and a grand feel to interior spaces



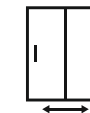
# SKYLINE SLIDING DOOR SYSTEM S1200 SYNCHRO



**Max size (WXH) :**  
**1400 X 2750 mm**



**Min size (WXH) :**  
**500 x 700 mm**



**Tested for**  
**25,000 Cycles**



**Max Door Weight:**  
**60 kg**



**12 mm profile**  
**is visible**

**Colour: BLACK**

## Casement - Internal Partition Doors.



## Internal Sliding System





## SKYLINE SLIDING DOOR SYSTEM S1200 AIR



The AIR System is without any bottom track at all, completely barrier-free. The sliding door is hanging on rollers that are running in a top track insert. Only one guiding point at the bottom (base plate with rollers) is required per sliding door to prevent the door from swinging.



Max size (WXH) :  
1400 X 3100 mm



Tested for  
25,000 Cycles



12 mm profile  
is visible



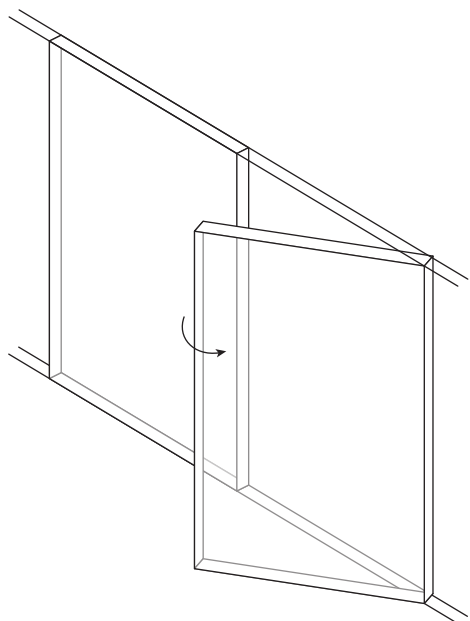
Min size (WXH) :  
500 x 700 mm



Max Door Weight:  
60 kg

Colour:  
1) Black

## Casement Doors INTERNAL



### LE aluminum-frame

The LE aluminum-frame hinge door offers you the possibility to plan and build doors with larger dimensions. The aluminum frame hinge door is available as standard with an LES handle and softclose-fittings. The LE door is a carcass connected hinge door guided by two hinges at the top and the bottom. The profile surface is available in Dark Bronze anodized



## WARDROBE SHUTTERS



**Max size (WXH) :**  
620 X 3000 mm



**Max Door Weight:**  
30 kg



**Concealed Handle**



**Min size (WXH) :**  
300 x 2000 mm



**Air Hinged**

**Colour:**

1) Dark Bronze anodized

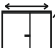



## LUMANI SYSTEMS NEW SWING DOOR SLIM LINE WITH LE-FA





The door leaf comprises an aluminum frame, pivot fittings and a decorative door panel. By extending the Swing Door Slim Line with a second leaf, it is possible to use the Swing Door Slim Line for larger openings. The second leaf is fixed at the top and bottom and can be detached if necessary. The visible surface can be symmetrical or asymmetrical. The double-leaf Swing Door is optional supplemented by sidelites and a transom window and fills wall openings of up to W 250 x H 300 cm while also delivering visual lightness

 **Clearance Max size (WXH) :**  
1744 X 2502 mm

 **Frame measur**  
Max size (WXH) : 1740 X 2500 mm

 **Incl. transom & sidelite**  
Max size (WXH) : 2500 X 3000 mm


 **Active door leaf:**  
Max size (WXH) : 855 X 2478 mm

 **Inactive door leaf:**  
Max size (WXH) : 855 X 2478 mm

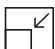
## SKYLINE SLIDING DOOR SYSTEM S1200 WD



 **Max size (WXH) :**  
1800 X 3500 mm

 **Tested for**  
25,000 Cycles

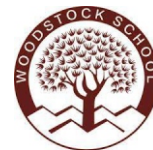
 **12 mm profile**  
is visible

 **Min size (WXH) :**  
500 x 700 mm

 **Max Door Weight:**  
180 kg

**Colour:**  
1) Black Matte

**OUR ESTEEM CLIENTS**





## WHY US ?

### BENEFIT FOR ARCHITECTS, PMC & RETAIL USERS

- Stylish **German design** aluminum systems.
- Wide choice of **Systems & Styles**.
- **German Quality engineering** at Indian market prices.
- **German** Technology researched & developed for Indian Topical Climate.
- **Tested & Certified systems** for Extreme climate conditions.
- **Superior Noise Reduction**.
- Large element sizes with **narrow face widths**.
- **Watertight** even during heavy tropical rain.
- Tested for high **wind resistance** providing long term structural stability.
- **Maintenance free** and long lasting.
- **Exceptional** features such as **Flyscreen, made of SS-304**.
- **High Thermal Insulation** for reducing the energy bills.
- **Window sill** profile for optimal protection of the building structure.
- **Domestic large warehouse** containing ready stocks for fast delivery.
- **Lumani-Schuco** offers multiple products and components for entire building requirements : **One-stop solution**.
- Lumani's huge experienced **installation team** ensuring Smooth execution of your project.
- All components from one source **integrated solutions**, ensuring availability of spares for life time.
- LUMANI Schuco's window and façade systems are **fully tested and certified** according to **European/American test standards**.
- Web **Inquiry tool** for easy pricing and ordering.
- **Expert advice** from the LUMANI Schüco trained & experienced **Sales Consultants**.
- Technically **Expert dedicated separate Operations & Sales Teams** for pre sales and post sales excellence.
- **Schüco experience** of over 70 years.
- **Lumani experience** for over **16 years** in the North Indian



Storii By ITC Hotels

**Lumani Head Office :** 5th Floor, Surya Commercial Complex, Opp. P.A.U Gate No.1, Ferozepur Road, Ludhiana, Punjab-141003

0161-5016251, 5051252, 88720-50715, care@damsungroup.com, [www.lumanisystems.com](http://www.lumanisystems.com)

**Chandigarh Showroom:** 1st floor, SCO 10-11-12, Motiaz Royal Business Park, Chandigarh-Ambala Highway, Zirakpur, Punjab, INDIA-140603

**Dehradun Showroom:** First Floor Durga Tower, GMS Road, Dehradun Uttarakhand INDIA- 248001